

A stylized graphic of a rail track, consisting of vertical bars representing sleepers and horizontal lines representing rails, in a dark blue color.

MARPA AGM: Network Rail Update

A stylized graphic of a rail track, consisting of vertical bars representing sleepers and horizontal lines representing rails, in a dark blue color.

Charles Baker, Senior Public Affairs Manager – Anglia route

Outline

- Performance overview
- Impact of hot weather
- Ely Area Capacity Enhancement (EACE)
- Cambridge South
- Cambridge re-signalling project
- Other upcoming work and closures

Performance overview

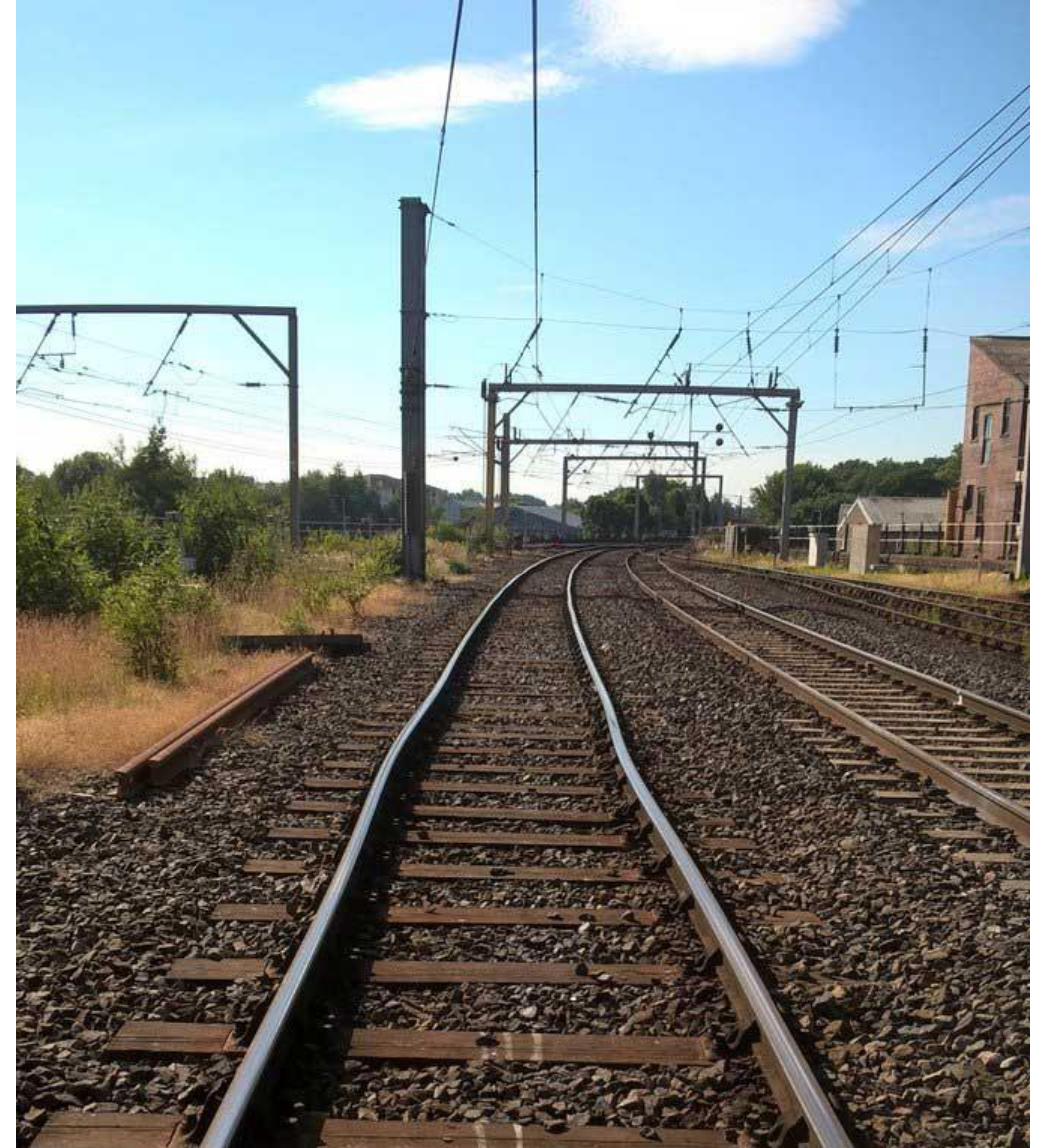
- Last financial year Anglia was the best performing Route in the country. Almost 94 % of trains arrived within three minutes of booked time.
- Generally good performance despite hot weather and industrial action.

Ipswich to Peterborough	OT3%
2021/22	83.0%
22/23 to P6	73.4%

Ipswich to Cambridge	OT3%
2021/22	95.1%
22/23 to P6	93.9%

Impact of hot weather

- Track temperatures are 20c higher than air, so 40c = 60c on track
- Track stress tested up to 50c – some buckling incidents, e.g. Watlington (right)
- Temporary speed restrictions on Fen Line and Southminster branch while we repair track
- We've launched a Climate Resilience Task Force



Ely Area Capacity Enhancement (EACE)

- Proposals to remodel the track layout at Ely North junction
- Options for level crossings at Queen Adelaide, Stonea, Burgess Drove (Waterbeach) and Wells Engine foot crossing.
- Proposals to upgrade another 15 level crossings across the wider area
- Increasing capacity through Ely - additional freight trains travelling as far as the Midlands, North and Scotland

Ely Area Capacity Enhancement (EACE)

Current (2019 baseline)
services via Ely per hour:

PASSENGER

- 1 x London – King's Lynn
- 1 x Norwich – Liverpool
- 1 x Birmingham – Stansted
- 0.5 x Ipswich – Peterborough
- 1 x Norwich – Stansted (off peak only)

FREIGHT

- 1 x Felixstowe – West Midlands
- 1 x flexible freight service

Potential for uplift in service
capacity* via Ely per hour:

PASSENGER

- 2 x London – King's Lynn
- 1 x Norwich – Liverpool
- 1 x Birmingham – Stansted
- 1 x Ipswich – Peterborough
- 1 x Norwich – Stansted (off peak only) or Cambridge (peak only)
- TBC**

FREIGHT

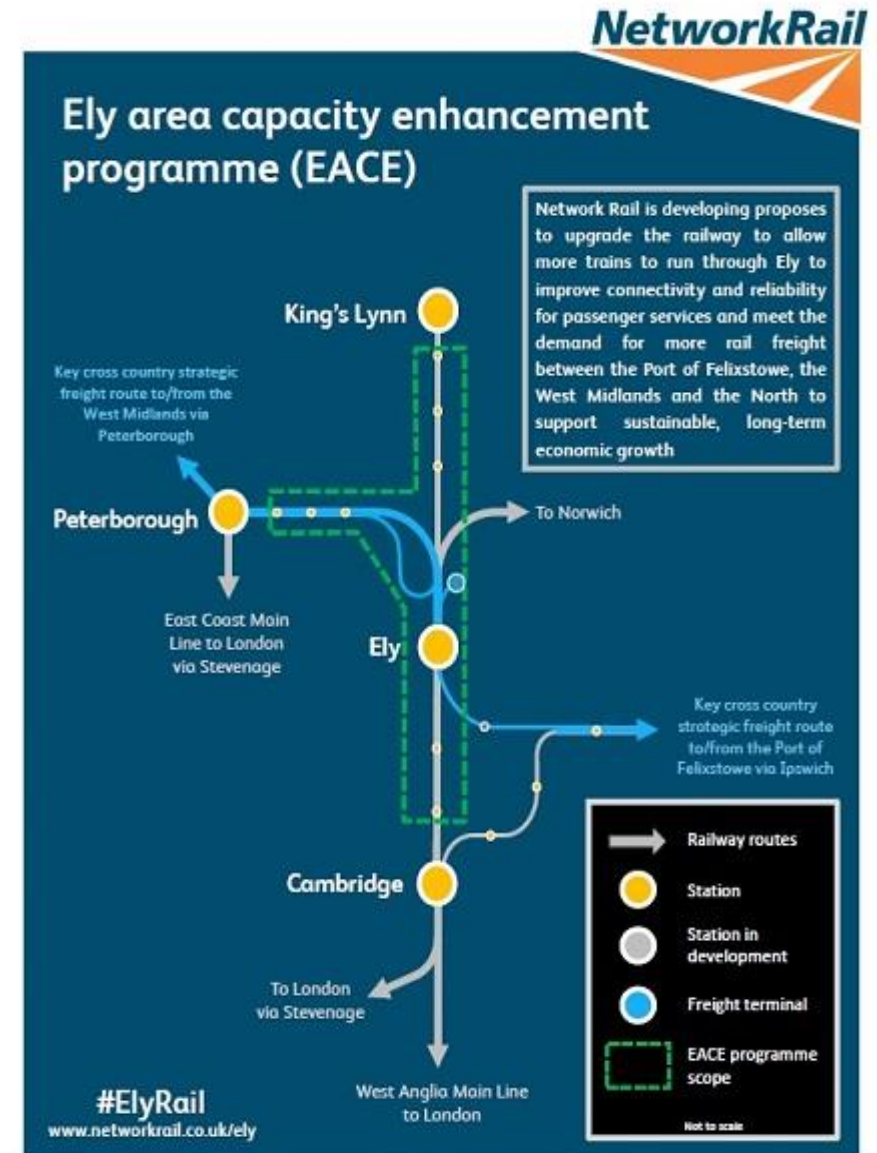
- 2 x Felixstowe – West Midlands
- 1 x flexible freight service

*Services are subject to change.

**Capacity for an additional service as yet unconfirmed.

Ely Area Capacity Enhancement (EACE)

- Outline business case submitted March 2022
- We need approval of funding for government to move to next stages (further design and delivery)
- BCR of 4.89



The development of the Ely Area Capacity Enhancement Programme is being funded by the UK Government, with contributions from Cambridgeshire County Council, the Cambridgeshire & Peterborough Combined Authority, New Anglia LEP and the Strategic Freight Network

Ely Area Capacity Enhancement (EACE)

MPs pile pressure on prime minister Liz Truss over £450m railway junction

 Dan Grimmer



Published: 10:09 AM September 22, 2022 Updated: 10:20 AM September 22, 2022

MPs urge investment at two rail junctions to grow east's economy

 Noah Vickers, Local Democracy Reporter



Published: 11:54 AM June 1, 2022



ed by MPs as a "bottleneck" in the region's railway

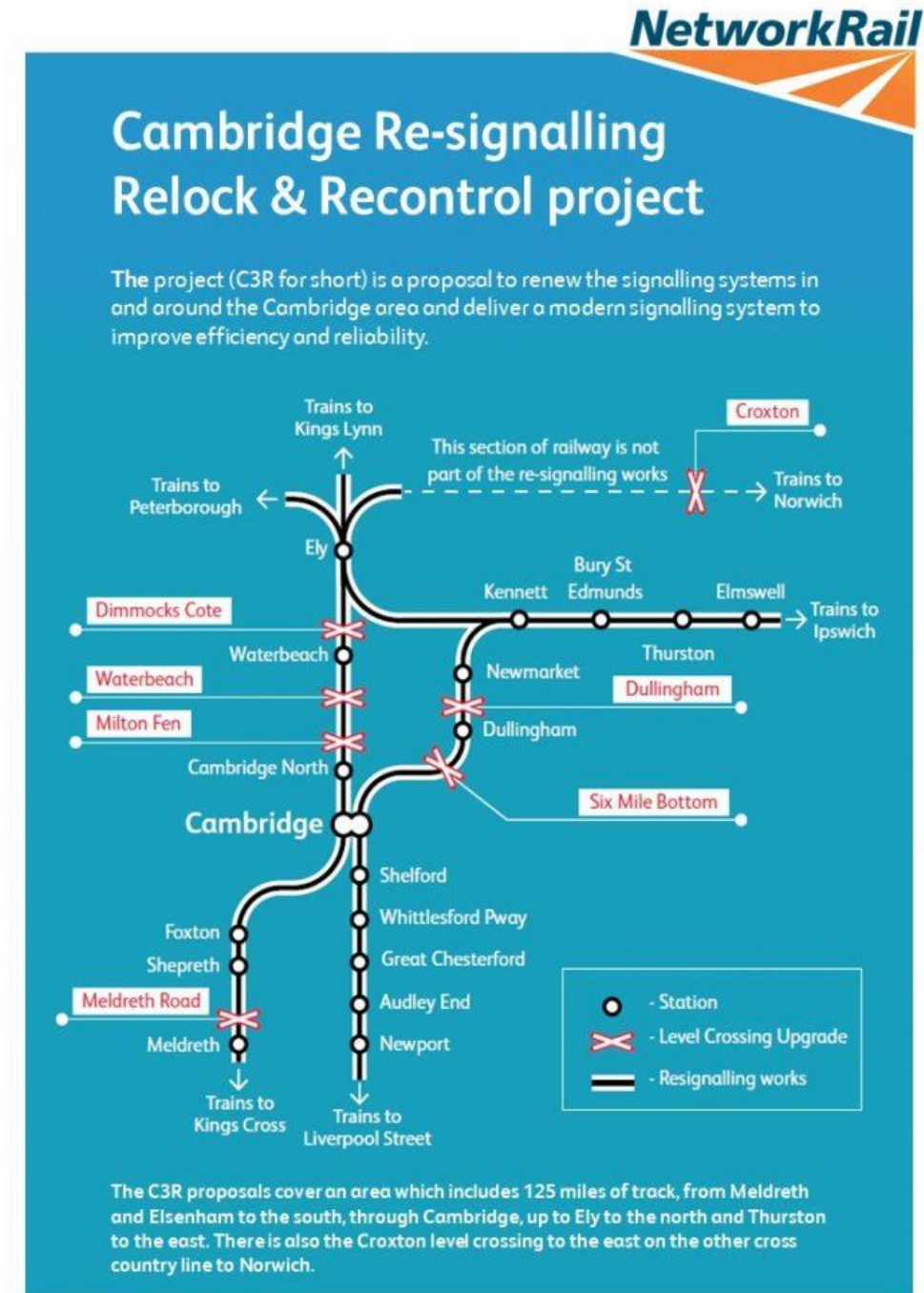
Strategic director of Transport East, Andrew Summers outlined the body's main aims – centred around supporting upgrades to the east/west corridor out of Felixstowe towards the Midlands. These include improving the A14 in Suffolk and sorting out the rail junctions at Haughley and Ely to improve the system's freight capacity.

Cambridge South

- New four platform station to serve biomedical campus & Addenbrooke's Hospital
- Services to London Liverpool Street and King's Cross (WAML & ECML)
- Designed station based on anticipated demand for 2043
- TWA0 submitted to the DfT – decision expected late 2022
- Expected completion: 2025

Cambridge re-signalling

- Upgrading signalling system – replacing over 700 assets, some over 50 years old
- £194m investment will improve reliability
- Closing 3 signal boxes – control moves to Cambridge
- Upgrading 7 level crossings to full barrier
- TWAO for temporary land purchase submitted August 2022



Cambridge re-signalling: TWAO

- Local negotiations through private treaties are being discussed with the land owners at each level crossing site
- The TWAO application is to facilitate the land acquisition only if the local negotiations fall through
- The Secretary of State for Transport will review any objections and announce if a Public Inquiry will be held
- Upgrades to level crossings will be facilitated with the county councils and Office for Rail and Road (ORR).
- Signalling commissioning planned from Christmas 2023

Other projects

- Swing bridges on Wherry Lines – work has started; closures this autumn and next spring.
- Liverpool Street station roof – replacing the roof, starting in 2023
- New station at Beaulieu Park, Chelmsford – Last stage of planning permission granted; detailed design work ahead of construction early 2023
- Next stage of Elizabeth line opening on 06 November. Shenfield to Reading and Heathrow Airport with change at Whitechapel (Full integration May 2023). Through services from Abbey Wood.

Upcoming work and closures

Start of closure	Line re-opens	What we're doing
Sunday 30 October 2022	Monday 31 October 2022	Cambridge re-signalling prep work between Cambridge and Cambridge North
Sunday 27 November 2022	Monday 28 November 2022	Multiple work including re-signalling prep, points maintenance, examining structures between Cambridge and Audley End/Royston
Sunday 25 December 2022	Tuesday 27 December 2022	Cambridge re-signalling prep between Waterbeach and Royston/Audley End via Cambridge



Questions?



Charles Baker, Senior Public Affairs Manager – Anglia route
Charles.baker@networkrail.co.uk